

Elev 575' / 175 m
N 60 39.2
E 011 54.7

17 NM SE Elverum

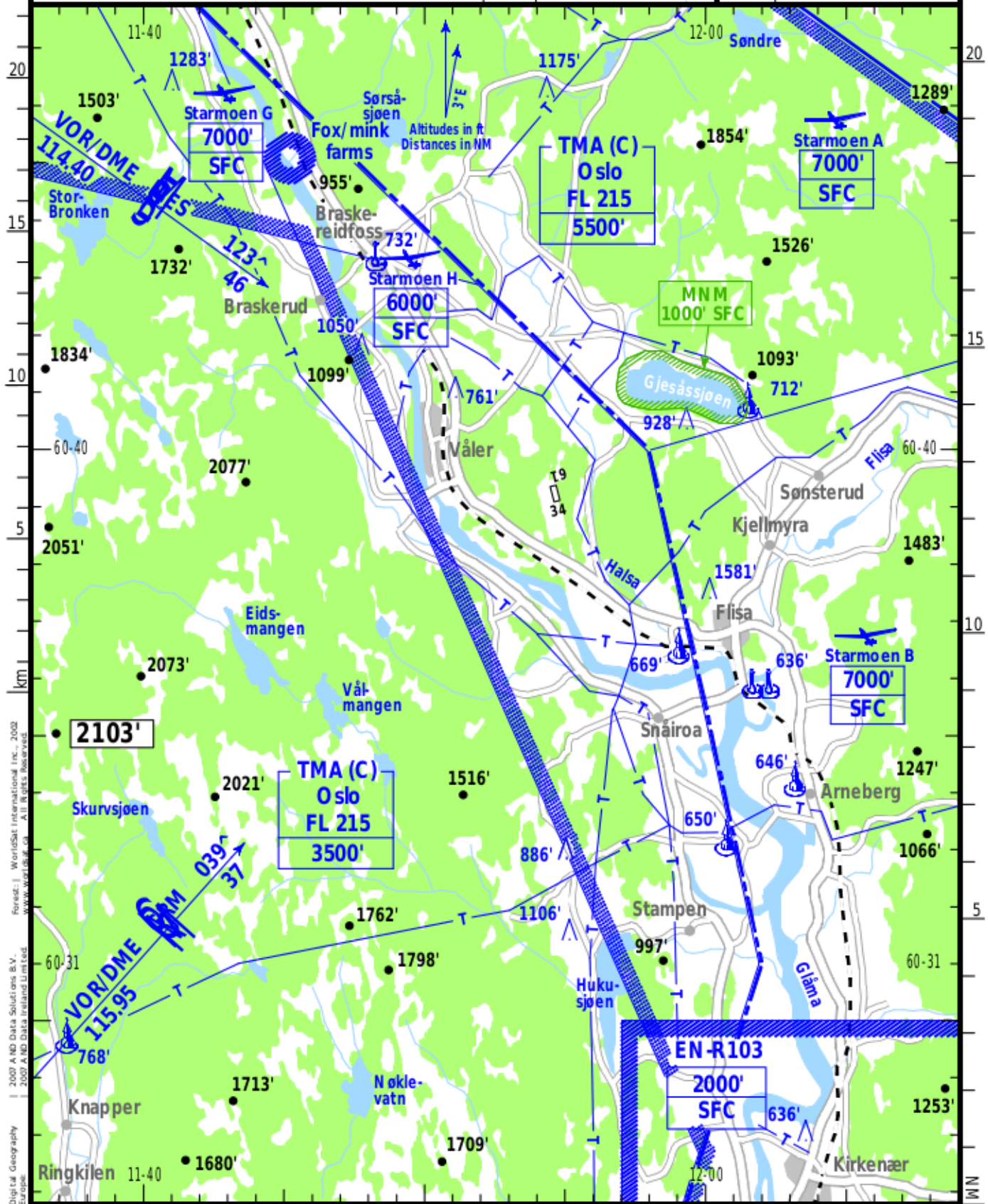
TMA (C) Oslo:

OSLO APPROACH 118.475

(Radio)

HASLEMOEN 123.500 (no, en)

RWY	ILS	RWY	ILS



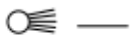
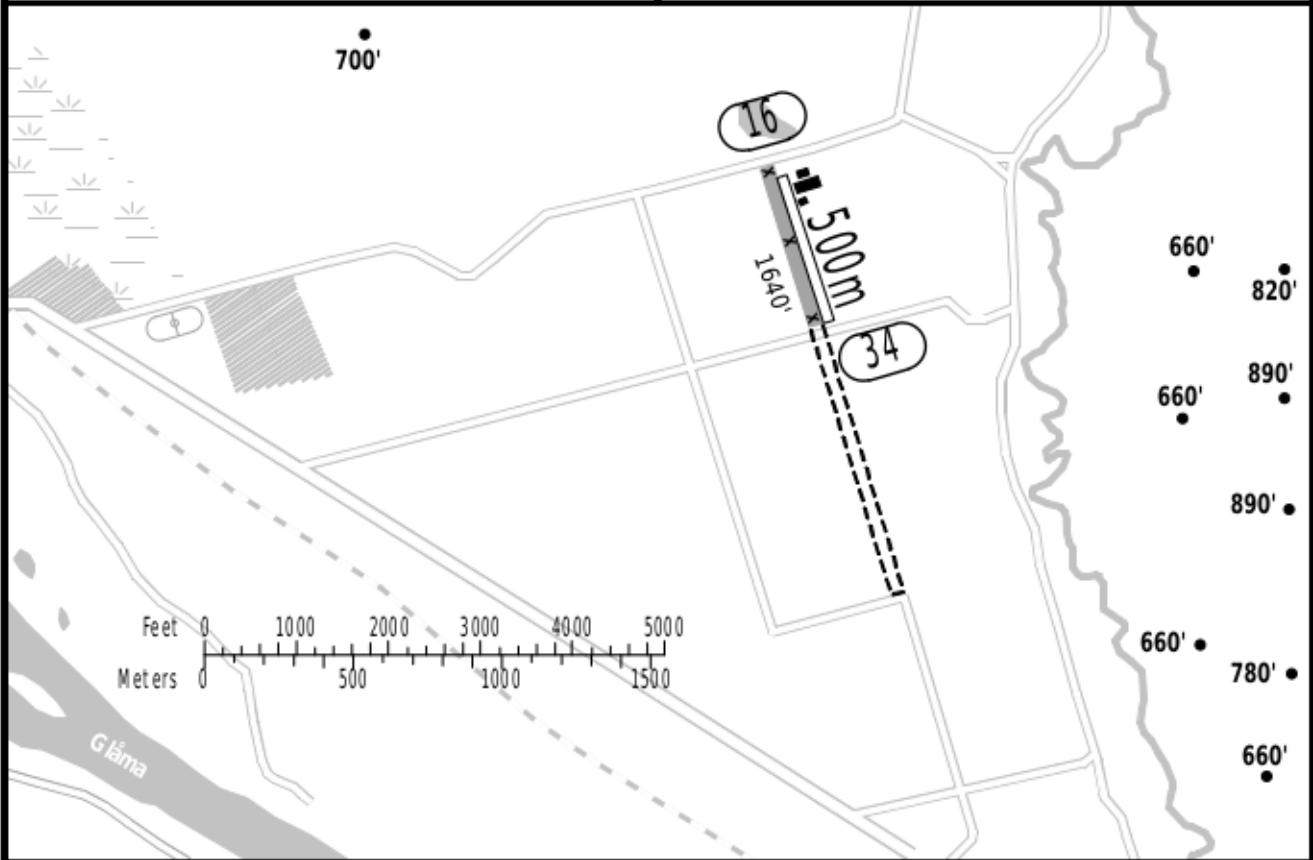
Digital Geography | 2007 A ND Data Solutions B.V. | 2007 A ND Data Ireland Limited
 Foresat | WorldSat International Inc. | 2002 | www.worldsat.com | All Rights Reserved

HASLEMOEN
HASLEMOEN
NORWAY

19-2 11 MAR 16



(FIS)
 NORWAY CONTROL **118.825**



RWY No	Dimension (m) - Surface	TORA (m)	LDA (m)	Strength	Lights
16	500 x 15 Grass	500	500		—
34					

Approach via VÅLER or ÅSNES; continue via left hand downwind to left hand base leg for landing.
Execute left hand traffic pattern at 1350'.